

## Monthly Weather Summary in Thailand June 2020

In June 2020, the southwest monsoon which prevailed over the Andaman Sea and Thailand was periodically strengthened. In addition, the low pressure cell covered Laos and upper Vietnam almost the month coupled with the low pressure cell covering the Bay of Martaban and Bay of Bengal during June 5-9. Moreover, the tropical storm “NURI (2002)” in the upper South China Sea made landfall over Yangjiang, Guangdong province, China on June 14 before downgrade respectively and dissipated on the same day. These conditions caused abundant rainfall over Thailand almost the month with thundershower in many areas. The average total rainfall over Thailand in June was 4 percent higher than 1981-2010 normal and the new highest amount of daily rainfall and monthly total rainfall was established in some places. However, the accumulated rainfall up to June was lower than normal with the deviation of 17 percent. Monthly rainfall was below normal in the northern part 15.5 mm (10%), northeastern part 67.4 mm (33%) and central part 5.6 mm (4%) while it was above normal in the eastern part 24.2 mm (9%), southern part (east coast) 102.5 mm (91%) and southern part (west coast) 80.2 mm (26%). More details on the weather are as follow:

**1 – 10 June :** The active southwest monsoon prevailed over the Andaman Sea and Thailand almost the period. In addition, the low pressure cell covered upper Vietnam during early period, then the low pressure cell covered the Bay of Martaban during mid-period and covering the Bay of Bengal during late period. These conditions caused scattered to fairly widespread rain over upper Thailand almost the period with heavy to very heavy rainfall in some areas. The maximum daily rainfall was 155.0 mm at Amphoe Bo Kluea in Nan province on June 4. Thundershower with gusty wind was reported at Pichit, Kalasin, Nakhon Ratchasima and Nakhon Phanom provinces on June 1, and at Mae Hong Son, Surin, Saraburi, Nakhon Sawan and Chai Nat provinces on June 2, and at Nan, Chiang Mai and Surin provinces on June 5. Landslide occurred at Nan province on June 1 with flash flooding at Nakhon Sawan province on June 2. In southern part, scattered to fairly widespread rain with isolated heavy to very heavy rainfall was found along the east coast while fairly widespread rain almost the period with heavy rainfall in some areas was reported along the west coast. The highest daily rainfall amount was 126.2 mm at Amphoe Mae Lan in Pattani province on June 1.

**11 - 20 June :** The moderate southwest monsoon which prevailed over the Andaman Sea and Thailand was active during mid-period associated with the low pressure cell covered Laos and upper Vietnam throughout the period. By the way, the tropical storm “NURI (2002)” in the upper South China Sea made landfall over Yangjiang, Guangdong province, China in the morning of June 14 and downgraded into the tropical depression and dissipated in the evening of the same day. These conditions caused abundant rainfall especially during mid-period that obtained fairly widespread rain with heavy to very heavy rainfall in some areas. The heaviest

daily rainfall was 180.0 mm at Amphoe Sangkhom in Nong Khai province on June 17. Thundershower with gusty wind was reported at Uttaradit, Phayao, Loei, Udon Thani, Kalasin and Chai Nat provinces on June 13, and at Phitsanulok and Chon Buri provinces on June 14. Flash floods occurred at Phetchabun province on June 14, 15 and at Chon Buri province on June 15. In southern Thailand, scattered to fairly widespread rain with isolated heavy to very heavy rainfall was found along the east coast while scattered to fairly widespread rain with heavy to very heavy rainfall in some areas was reported along the west coast. The maximum daily rainfall was 116.4 mm at Amphoe Takua Pa in Phang-nga province on June 14.

**21 - 30 June :** Due to the southwest monsoon prevailing over the Andaman Sea and Thailand was weak throughout the period and the low pressure cell covering Laos and upper Vietnam during the second half of the period, rainfall relatively decreased in upper Thailand with isolated to scattered rain almost the period with heavy rainfall in some areas especially in the eastern part that received scattered to fairly widespread rain with isolated heavy to very heavy rainfall. The highest daily rainfall was 120.7 mm at Laem Chabang in Chon Buri province on June 29. Gusty wind was reported at Chachoengsao province on June 22, and at Phayao, Lampang and Lamphun provinces on June 23. Flash floods occurred at Lamphun province on June 24, at Chiang Mai province on June 26, at Phayao and Lamphang provinces on June 27. In southern part, scattered to fairly widespread rain was found almost the period with heavy to very heavy rainfall in some areas. The maximum daily rainfall was 101.4 mm at Amphoe Si Kao in Trang province on June 28.

-----

#### Breaking records of the highest daily rainfall in June

Station	New Record 2020		Previous Record		Start since
	Rainfall (mm.)	Date	Rainfall (mm.)	Date / Year	
Si Samrong (Sukhothai)	68.3	13	66.8	20/2018	1969
Mueang (Nakhon Ratchasima)	145.5	14	114.8	27/1969	1951
Lam Chabang (Chon Buri)	120.7	29	97.9	12/2013	1992
Chawang (Nakhon Si Thammarat)	88.5	25	66.2	14/2001	1995

Breaking records of the highest monthly rainfall in June

Station	New Record 2020	Previous Record		Start since
	Rainfall (mm.)	Rainfall (mm.)	Year	
Pathum Thani	343.6	234.9	2003	1999
Mueang (Rayong)	342.4	338.1	2013	1981
Mueang (Prachuap Khiri Khan)	210.9	207.2	1973	1951
Phunphin (Surat Thani)	267.6	267.1	1956	1988
Ko Samui (Surat Thani)	289.0	269.1	2008	1968
Mueang (Nakhon Si Thammarat)	303.5	277.6	2006	1951
Mueang (Pattani)	305.9	281.8	2008	1964
Yala	332.8	326.2	2011	1982

---

**Note** : Rainfall, temperatures and natural disasters in this report were updated up to July 3, 2020

Climatological Center  
 Meteorological Development Division  
 Meteorological Department

Monthly Current Report  
Rainfall and Accumulative Rainfall  
June 2020

Northern Thailand

Station	Temperature ( °c)		Rainfall (mm)		Accumulative rainfall (mm) Since 1 January	
	Mean	Above or below normal	Actual	Above or below normal	Actual	Above or below normal
Chiang Rai	28.5	1.3	191.7	13.3	351.7	-187.5
Mae Hong Son	29.0	1.4	111.4	-79.1	271.0	-186.4
Phayao	28.6	1.0	111.4	8.6	404.2	-12.6
Chiang Mai	29.5	1.9	98.9	-25.6	209.6	-165.1
Tha Wang Pha	28.5	1.3	181.5	-5.8	364.4	-125.5
Nan	29.6	1.3	233.1	99.3	469.3	9.6
Lamphun	29.2	1.0	159.0	34.8	345.5	1.2
Lampang	29.6	1.3	134.8	17.3	285.2	-93.0
Mae Sariang	28.2	1.4	146.2	-36.8	277.0	-135.2
Phrae	30.0	1.8	202.2	63.4	438.1	-3.1
Uttaradit	30.5	1.6	101.4	-105.0	262.9	-287.9
Bhumibol Dam	30.0	1.5	120.2	13.7	197.3	-203.5
Tak	30.2	1.8	53.8	-74.0	237.5	-145.7
Mae Sot	28.2	1.9	121.0	-134.4	175.1	-324.7
Umphang	26.8	1.8	128.1	-59.4	268.8	-278.8
Phitsanulok	30.1	1.1	132.7	-33.0	385.1	-51.3
Lom Sak	29.3	1.1	144.7	8.5	426.0	10.1
Phetchabun	29.5	1.3	205.9	44.2	487.3	17.2
Wichian Buri	30.0	0.9	160.1	15.8	303.8	-159.4
Kamphaeng Phet	29.8	1.4	76.2	-88.9	190.0	-275.5
Over the area	29.3	1.4	140.7	-15.5 -10%	317.5	-130.9 -29%

Northeastern Thailand

Station	Temperature ( °c)		Rainfall (mm)		Accumulative rainfall (mm) Since 1 January	
	Mean	Above or below normal	Actual	Above or below normal	Actual	Above or below normal
Nong Khai	29.7	1.5	129.3	-133.0	614.6	-21.4
Loei	28.5	0.7	111.3	-48.3	358.1	-165.1
Udon Thani	29.4	0.8	173.4	-55.6	444.2	-135.4
Nakhon Phanom	29.4	1.6	127.7	-281.8	507.8	-354.0
Sakon Nakhon	29.2	1.1	146.5	-120.3	514.7	-164.5
Mukdahan	30.2	1.9	42.4	-191.0	215.4	-353.8
Khon Kaen	29.4	0.8	106.2	-55.4	383.1	-104.3
Kosum Phisai	29.9	0.9	114.6	-63.2	490.2	-8.4
Roi Et	29.9	1.2	67.4	-156.1	328.7	-220.8
Chaiyaphum	29.3	0.8	157.2	19.6	464.5	24.0
Ubon Ratchathani	30.0	1.6	163.2	-77.0	435.3	-148.2
Tha Tum	29.3	0.2	128.0	-78.1	235.5	-295.0
Surin	29.2	0.9	242.0	37.3	452.9	-87.6
Nakhon Ratchasima	29.4	0.3	239.5	135.0	522.2	130.0
Chok Chai	29.4	0.7	126.5	19.2	378.9	-15.0
Nang Rong	28.9	0.3	100.3	-29.4	437.0	-13.1
Over the area	29.4	0.9	136.0	-67.4 -33%	423.9	-120.9 -22%

- NOTES : 1) Mean temperature is the average of daily dry-bulb temperature  
2) "T" is trace, rainfall amount less than 0.1 mm.  
3) "blank" is incomplete data.  
4) Temperature and rainfall are preliminary data.

Monthly Current Report  
Rainfall and Accumulative Rainfall  
June 2020

Central Thailand

Station	Temperature ( °c)		Rainfall (mm)		Accumulative rainfall (mm) Since 1 January	
	Mean	Above or below normal	Actual	Above or below normal	Actual	Above or below normal
Nakhon Sawan	30.3	0.9	150.2	12.9	253.9	-147.1
Bua Chum	30.2	1.3	158.3	42.0	288.4	-107.1
Lop Buri	30.3	1.3	98.5	-25.5	165.7	-231.6
Suphan Buri	30.5	1.3	101.1	6.7	154.9	-132.4
Thong Pha Phum	28.2	1.1	164.7	-113.6	423.4	-252.4
Kanchanaburi	30.3	1.3	121.8	35.4	244.7	-116.0
Bangkok Airport	29.7	0.3	138.4	-29.7	353.2	-171.8
Bangkok Metropolis	30.1	0.6	183.9	26.8	370.0	-201.6
Over the area	30.0	1.1	139.6	-5.6 -4%	281.8	-170.0 -38%

Eastern Thailand

Station	Temperature ( °c)		Rainfall (mm)		Accumulative rainfall (mm) Since 1 January	
	Mean	Above or below normal	Actual	Above or below normal	Actual	Above or below normal
Prachin Buri	29.6	0.7	197.9	-25.6	370.4	-275.5
Kabin Buri	28.7	0.3	171.2	-26.7	459.0	-115.4
Aranyaprathet	29.2	0.6	169.6	6.0	432.8	-70.2
Chon Buri	29.7	0.1	161.1	13.4	508.6	39.8
Ko Sichang	29.4	0.1	301.8	176.4	465.6	52.3
Pattaya	29.0	0.1	152.1	33.1	389.9	-24.6
Sattahip	29.3	-0.1	280.1	150.0	517.2	32.5
Rayong	29.3	-0.1	342.4	177.3	761.0	188.2
Chanthaburi	28.2	0.3	446.2	-66.4	1078.8	-78.5
Khlong Yai	27.8	0.4	634.3	-195.6	1332.8	-347.7
Over the area	29.0	0.2	285.7	24.2 9%	631.6	-60.0 -9%

- NOTES :
- 1) Mean temperature is the average of daily dry-bulb temperature
  - 2) "T" is trace, rainfall amount less than 0.1 mm.
  - 3) "blank" is incomplete data.
  - 4) Temperature and rainfall are preliminary data.

Monthly Current Report  
Rainfall and Accumulative Rainfall  
June 2020

Southern Thailand, east coast

Station	Temperature ( °c)		Rainfall (mm)		Accumulative rainfall (mm) Since 1 January	
	Mean	Above or below normal	Actual	Above or below normal	Actual	Above or below normal
Phetchaburi	29.9	0.9	67.2	-24.8	212.3	-64.5
Hua Hin	29.1	0.1	164.3	85.4	223.3	-91.9
Prachuap Khiri Khan	28.7	0.3	210.9	124.7	370.5	-16.1
Chumphon	27.8	0.2	151.8	-15.4	644.2	-0.9
Surat Thani	27.6	0.0	267.6	142.6	392.1	-57.4
Ko Samui	28.5	-0.2	289.0	164.9	579.4	-5.1
Nakhon Si Thammarat	28.0	-0.2	313.5	196.2	807.8	106.4
Songkhla	28.3	-0.3	175.5	75.6	397.4	-80.3
Hat Yai Airport	27.5	-0.2	133.0	13.7	338.2	-200.7
Pattani Airport	27.7	-0.2	305.9	196.5	641.9	188.1
Narathiwat	28.0	0.1	291.5	168.3	592.8	-18.0
Over the area	28.3	0.1	215.5	102.5 91%	472.7	-22.0 -4%

Southern Thailand, west coast

Station	Temperature ( °c)		Rainfall (mm)		Accumulative rainfall (mm) Since 1 January	
	Mean	Above or below normal	Actual	Above or below normal	Actual	Above or below normal
Ranong	27.4	0.1	448.3	-201.1	661.7	-728.1
Takua Pa	27.3	-0.5	539.1	114.9	1307.7	40.9
Phuket	28.2	-0.4	403.4	190.1	883.6	140.2
Phuket Airport	27.8	-0.5	553.0	296.2	998.3	142.3
Ko Lanta	27.8	-0.7	427.0	168.5	959.4	241.7
Trang Airport	27.6	0.2	168.8	-32.3	533.4	-161.6
Satun	27.9	0.1	208.9	25.4	882.7	70.9
Over the area	27.7	-0.3	392.6	80.2 26%	889.5	-36.3 -4%

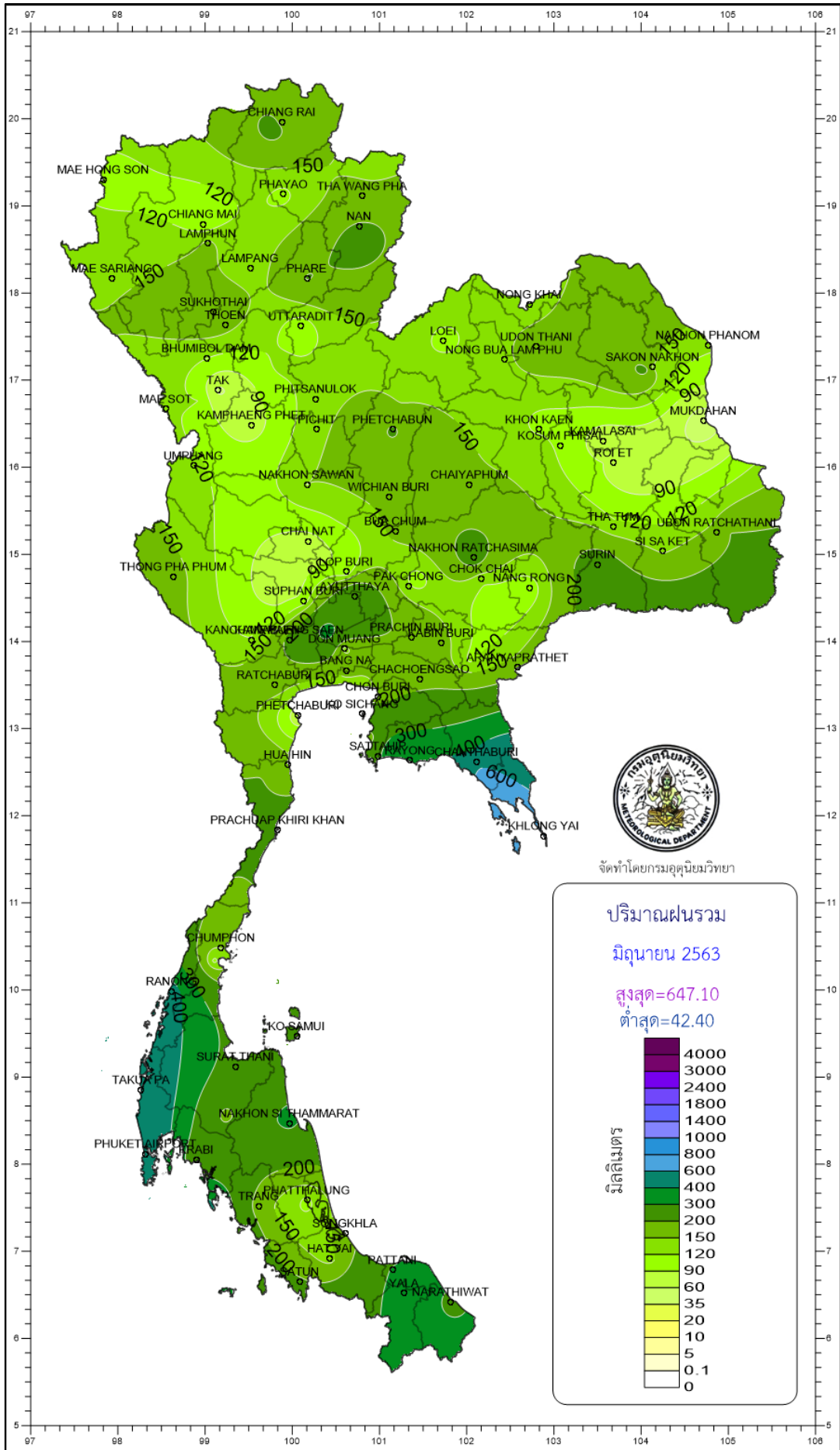
- NOTES :
- 1) Mean temperature is the average of daily dry-bulb temperature
  - 2) "T" is trace, rainfall amount less than 0.1 mm.
  - 3) "blank" is incomplete data.
  - 4) Temperature and rainfall are preliminary data.

## Monthly Current Report

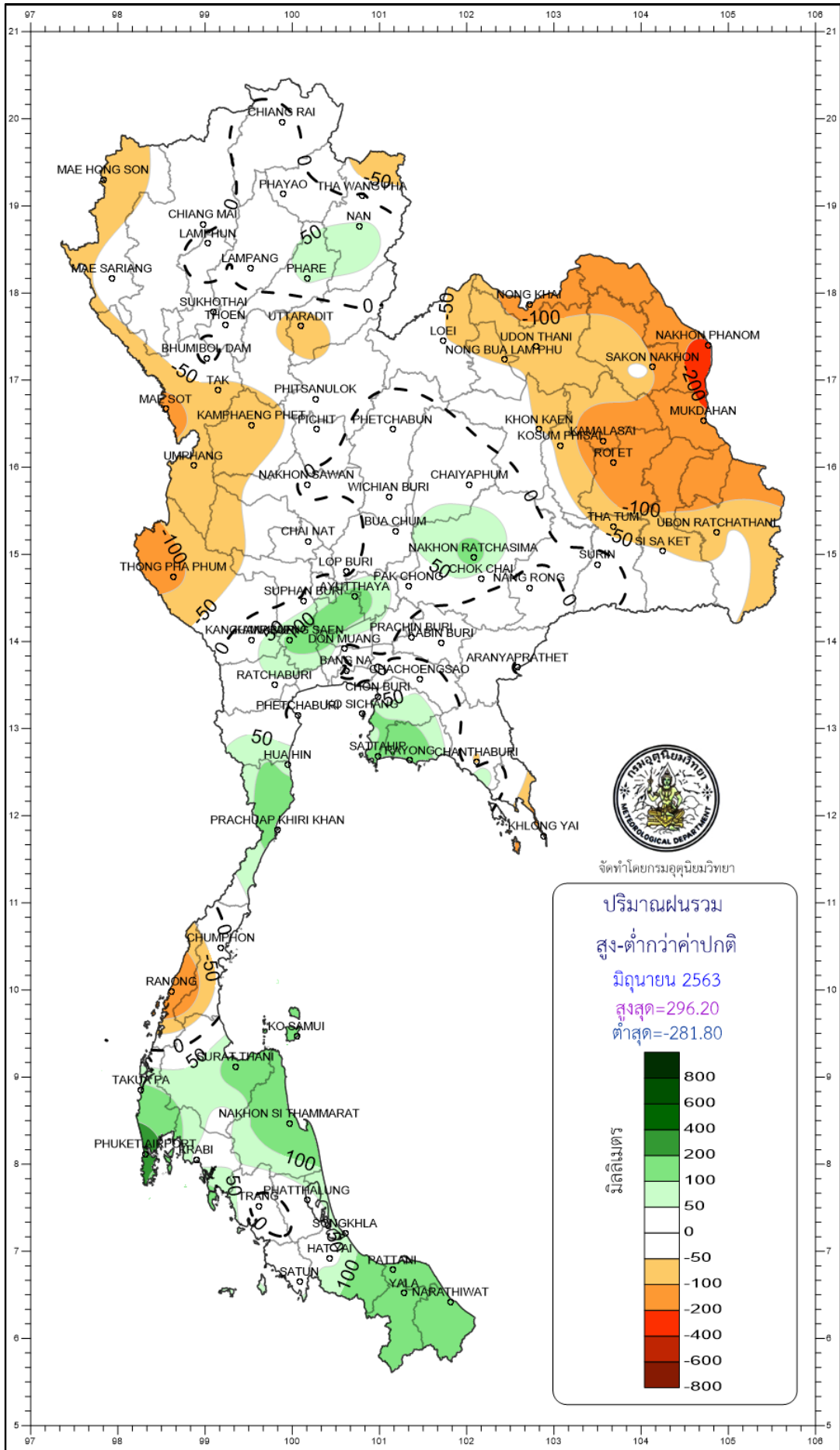
June 2020

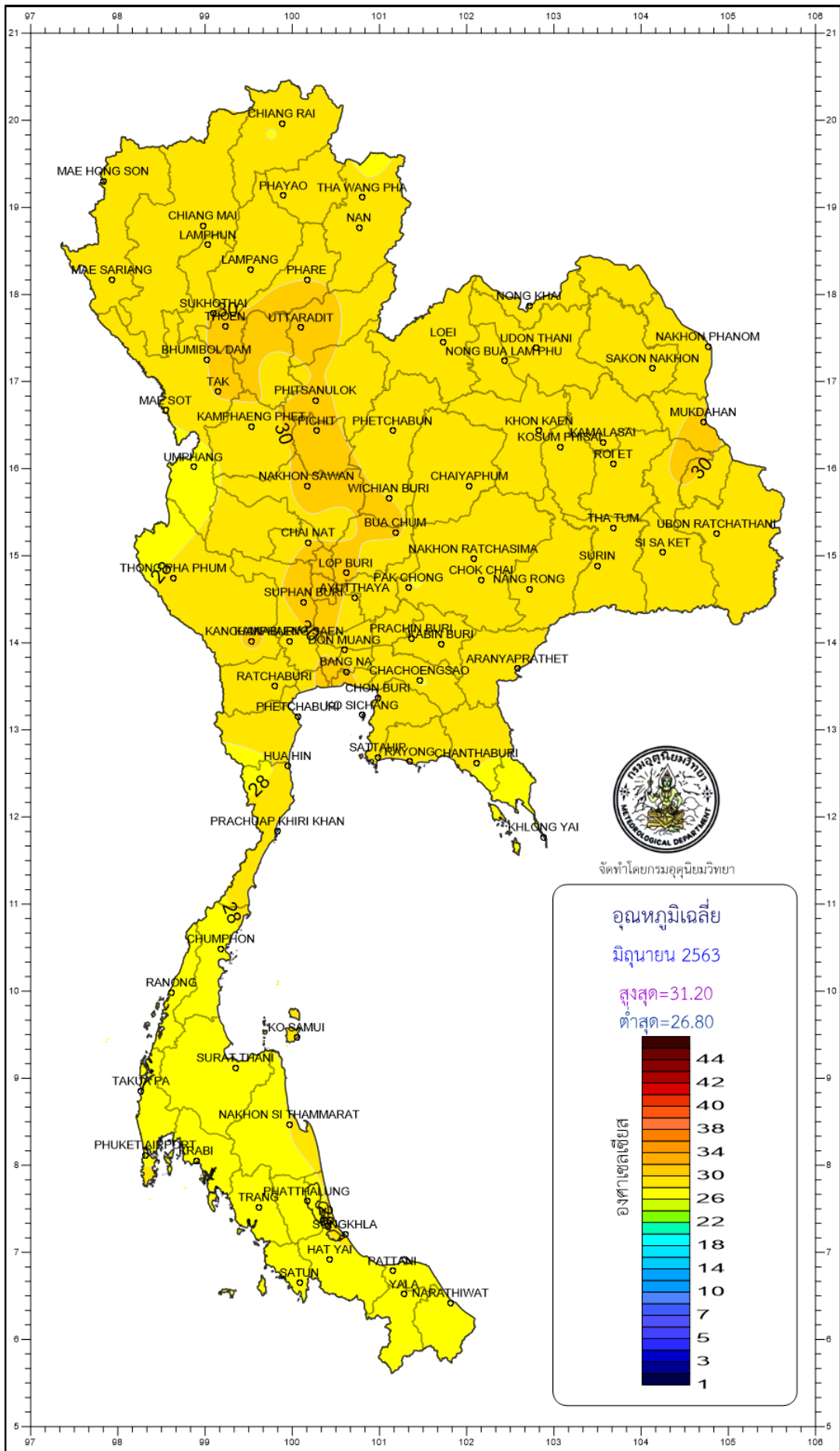
Region	Station	Temperature (°c)		Rainfall (mm)		Accumulative rainfall (mm) Since 1 January	
		Mean	Above or below normal	Actual	Above or below normal	Actual	Above or below normal
North	Chiang Rai	28.5	1.3	191.7	13.3	351.7	-187.5
	Mae Hong Son	29.0	1.4	111.4	-79.1	271.0	-186.4
	Phayao	28.6	1.0	111.4	8.6	404.2	-12.6
	Chiang Mai	29.5	1.9	98.9	-25.6	209.6	-165.1
	Tha Wang Pha	29.0	1.1	181.5	8.1	364.4	-144.0
	Nan	29.6	1.3	233.1	99.3	469.3	9.6
	Lamphun	29.2	1.0	159.0	34.8	345.5	1.2
	Lampang	29.6	1.3	134.8	17.3	285.2	-93.0
	Mae Sariang	28.2	1.4	146.2	-36.8	277.0	-135.2
	Phrae	30.0	1.8	202.2	63.4	438.1	-3.1
	Uttaradit	30.5	1.6	101.4	-105.0	262.9	-287.9
	Bhumibol Dam	30.0	1.5	120.2	13.7	197.3	-203.5
	Tak	30.2	1.8	53.8	-74.0	237.5	-145.7
	Mae Sot	28.2	1.9	121.0	-134.4	175.1	-324.7
	Umphang	26.8	1.8	128.1	-59.4	268.8	-278.8
	Phitsanulok	30.1	1.1	132.7	-33.0	385.1	-51.3
	Lom Sak	29.3	1.1	144.7	8.5	426.0	10.1
	Phetchabun	29.5	1.3	205.9	44.2	487.3	17.2
	Wichian Buri	30.0	0.9	160.1	15.8	303.8	-159.4
	Kamphaeng Phet	29.8	1.4	76.2	-88.9	190.0	-275.5
Northeast	Nong Khai	29.7	1.5	129.3	-133.0	614.6	-21.4
	Loei	28.5	0.7	111.3	-48.3	358.1	-165.1
	Udon Thani	29.4	0.8	173.4	-55.6	444.2	-135.4
	Nakhon Phanom	29.4	1.6	127.7	-281.8	507.8	-354.0
	Sakon Nakhon	29.2	1.1	146.5	-120.3	514.7	-164.5
	Mukdahan	30.2	1.9	42.4	-191.0	215.4	-353.8
	Khon Kaen	29.4	0.8	106.2	-55.4	383.1	-104.3
	Kosum Phisai	29.9	0.9	114.6	-63.2	490.2	-8.4
	Roi Et	29.9	1.2	67.4	-156.1	328.7	-220.8
	Chaiyaphum	29.3	0.8	157.2	19.6	464.5	24.0
	Ubon Ratchathani	30.0	1.6	163.2	-77.0	435.3	-148.2
	Tha Tum	29.3	0.2	128.0	-78.1	235.5	-295.0
	Surin	29.2	0.9	242.0	37.3	452.9	-87.6
	Nakhon Ratchasima	29.4	0.3	239.5	135.0	522.2	130.0
Chok Chai	29.4	0.7	126.5	19.2	378.9	-15.0	
Nang Rong	28.9	0.3	100.3	-29.4	437.0	-13.1	
Central	Nakhon Sawan	30.3	0.9	150.2	12.9	253.9	-147.1
	Bua Chum	30.2	1.3	158.3	42.0	288.4	-107.1
	Lop Buri	30.3	1.3	98.5	-25.5	165.7	-231.6
	Suphan Buri	30.5	1.3	101.1	6.7	154.9	-132.4
	Thong Pha Phum	28.2	1.1	164.7	-113.6	423.4	-252.4
	Kanchanaburi	30.3	1.3	121.8	35.4	244.7	-116.0
	Bangkok Airport	29.7	0.3	138.4	-29.7	353.2	-171.8
	Bangkok Metropolis	30.1	0.6	183.9	26.8	370.0	-201.6
East	Prachin Buri	29.6	0.7	197.9	-25.6	370.4	-275.5
	Kabin Buri	28.7	0.3	171.2	-26.7	459.0	-115.4
	Aranyaprathet	29.2	0.6	169.6	6.0	432.8	-70.2
	Chon Buri	29.7	0.1	161.1	13.4	508.6	39.8
	Ko Sichang	29.4	0.1	301.8	176.4	465.6	52.3
	Pattaya	29.0	0.1	152.1	33.1	389.9	-24.6
	Sattahip	29.3	-0.1	280.1	150.0	517.2	32.5
	Rayong	29.3	-0.1	342.4	177.3	761.0	188.2
	Chanthaburi	28.2	0.3	446.2	-66.4	1078.8	-78.5
Khlung Yai	27.8	0.4	634.3	-195.6	1332.8	-347.7	
South (East Coast)	Phetchaburi	29.9	0.9	67.2	-24.8	212.3	-64.5
	Hua Hin	29.1	0.1	164.3	85.4	223.3	-91.9
	Prachuap Khiri Khan	28.7	0.3	210.9	124.7	370.5	-16.1
	Chumphon	27.8	0.2	151.8	-15.4	644.2	-0.9
	Surat Thani	27.6	0.0	267.6	142.6	392.1	-57.4
	Ko Samui	28.5	-0.2	289.0	164.9	579.4	-5.1
	Nakhon Si Thammarat	28.0	-0.2	313.5	196.2	807.8	106.4
	Songkhla	28.3	-0.3	175.5	75.6	397.4	-80.3
	Hat Yai Airport	27.5	-0.2	133.0	13.7	338.2	-200.7
	Pattani Airport	27.7	-0.2	305.9	196.5	641.9	188.1
Narathiwat	28.0	0.1	291.5	168.3	592.8	-18.0	
South (West Coast)	Ranong	27.4	0.1	448.3	-201.1	661.7	-728.1
	Takua Pa	27.3	-0.5	539.1	114.9	1307.7	40.9
	Phuket	28.2	-0.4	403.4	190.1	883.6	140.2
	Phuket Airport	27.8	-0.5	553.0	296.2	998.3	142.3
	Ko Lanta	27.8	-0.7	427.0	168.5	959.4	241.7
	Trang Airport	27.6	0.2	168.8	-32.3	533.4	-161.6
	Satun	27.9	0.1	208.9	25.4	882.7	70.9
	Over the area	29.1	0.8	195.6	6.9	460.1	-97.4
					4%		-17%

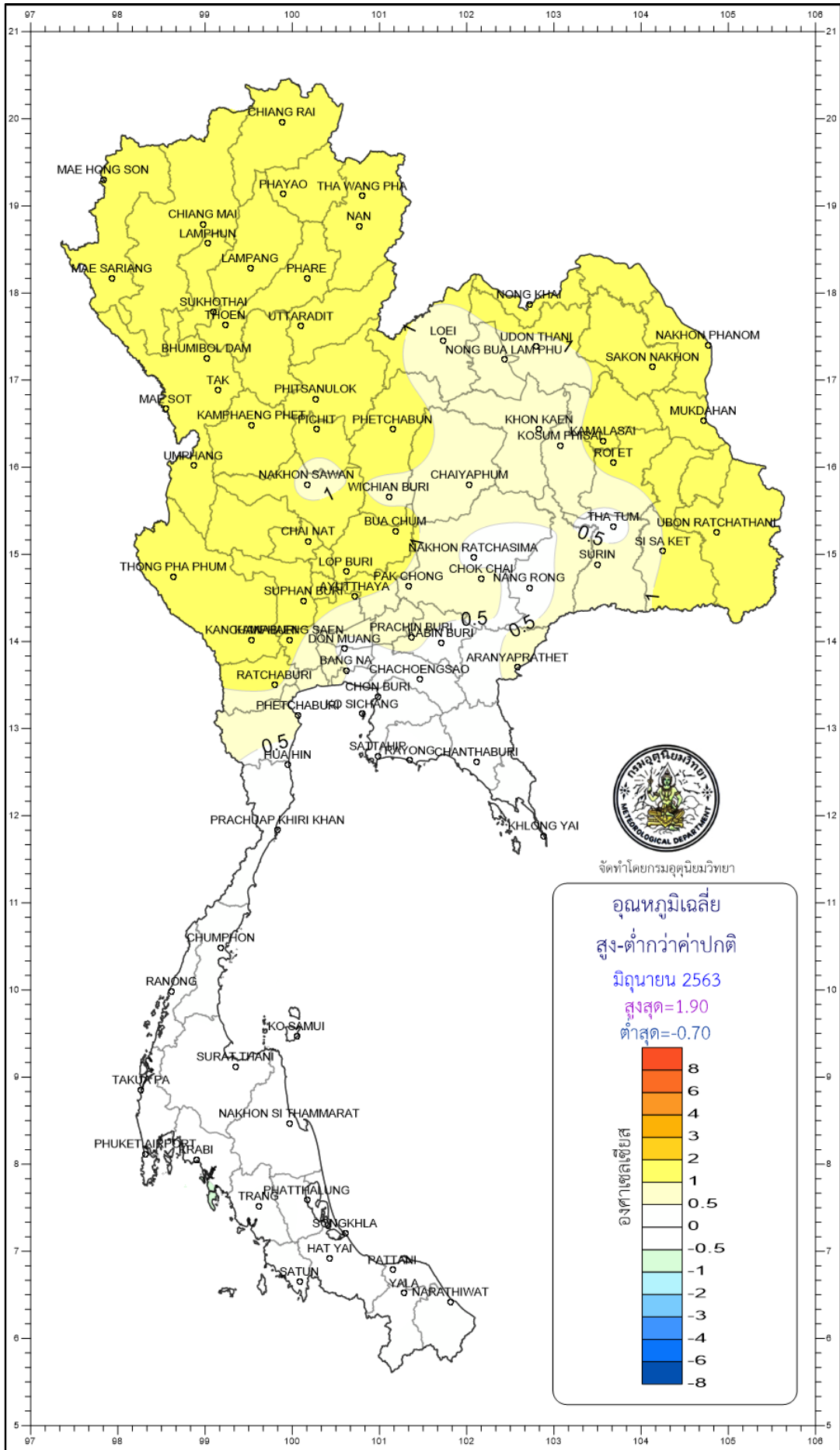
- NOTES :
- 1) Mean temperature is the average of daily dry-bulb temperature
  - 2) "T" is trace, rainfall amount less than 0.1 mm.
  - 3) "blank" is incomplete data.
  - 4) Temperature and rainfall are preliminary data.



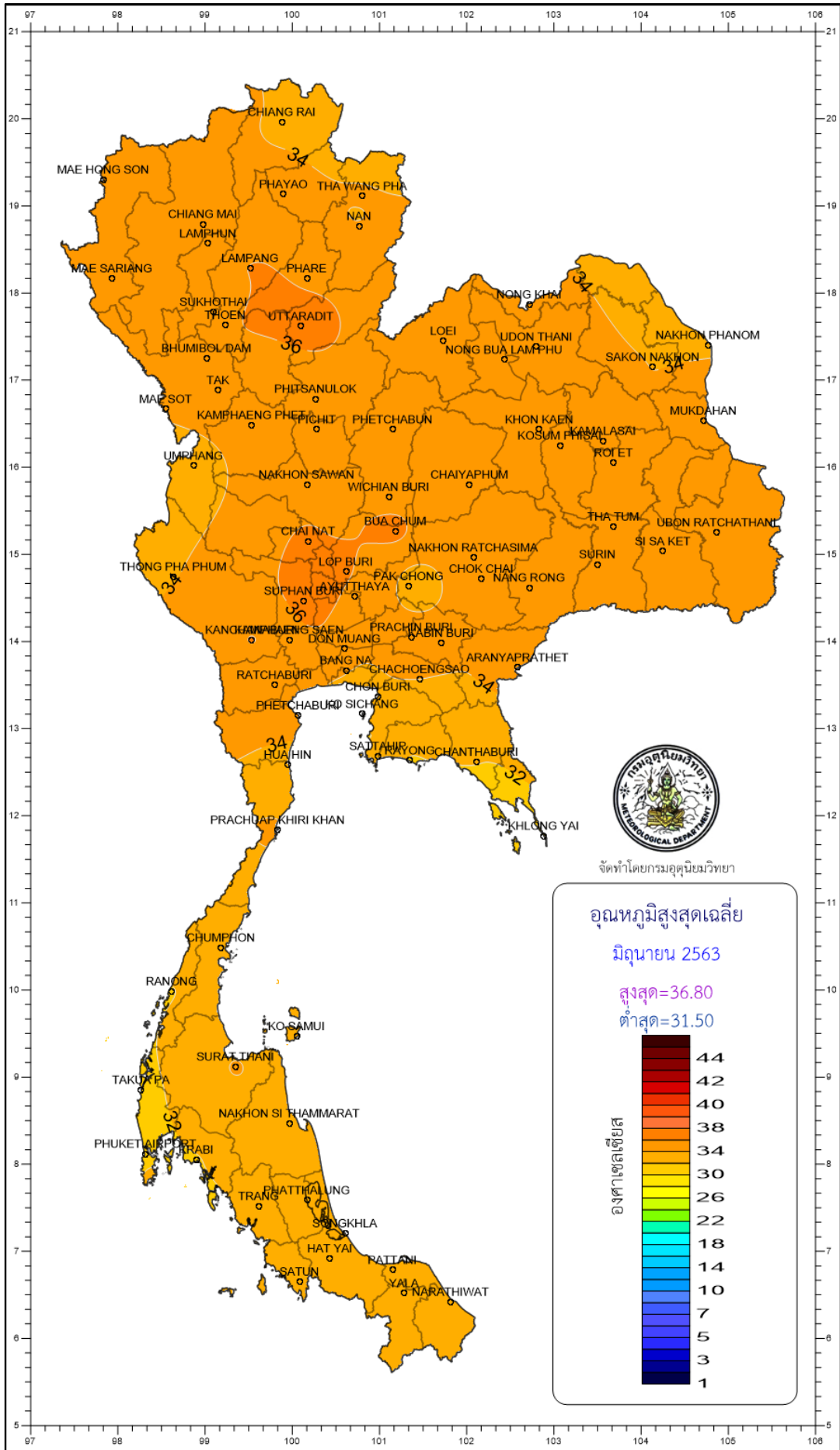


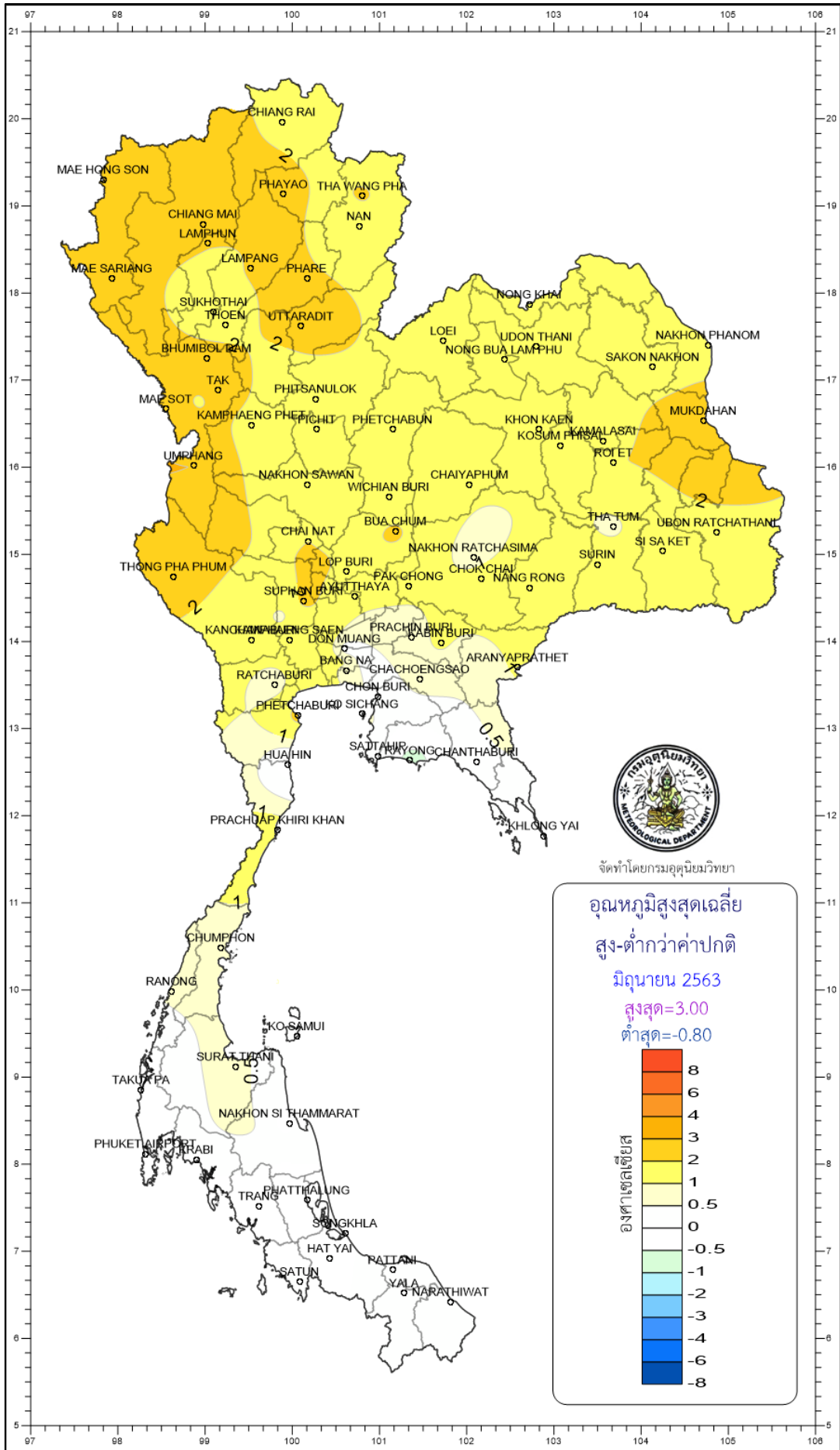




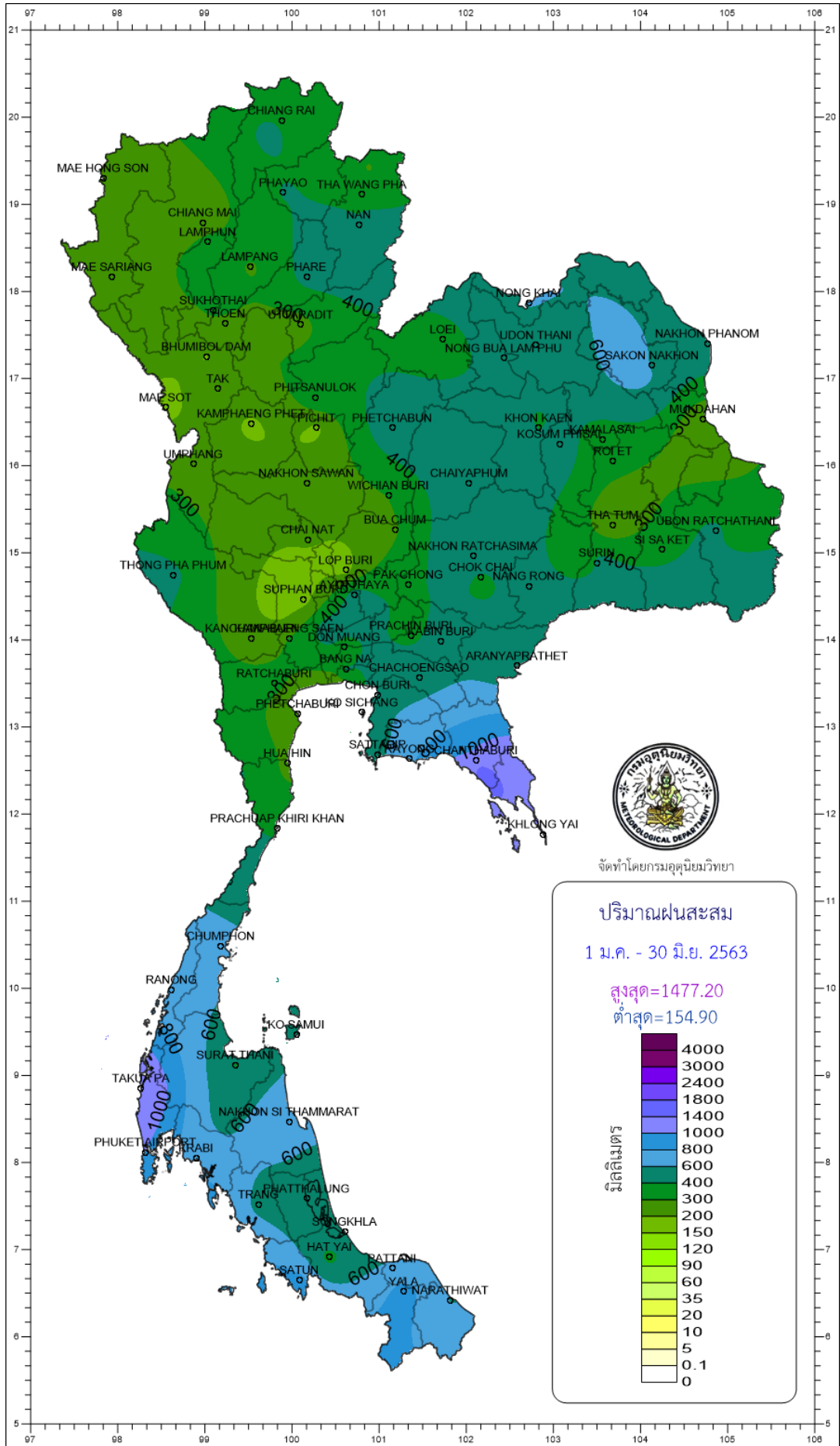


จัดทำโดยกรมอุตุนิยมวิทยา





จัดทำโดยกรมอุตุนิยมวิทยา



จัดทำโดยกรมอุตุนิยมวิทยา

